

# American River Common Features Natomas Basin

## Levee Improvement Project Monthly Update

JULY 2023

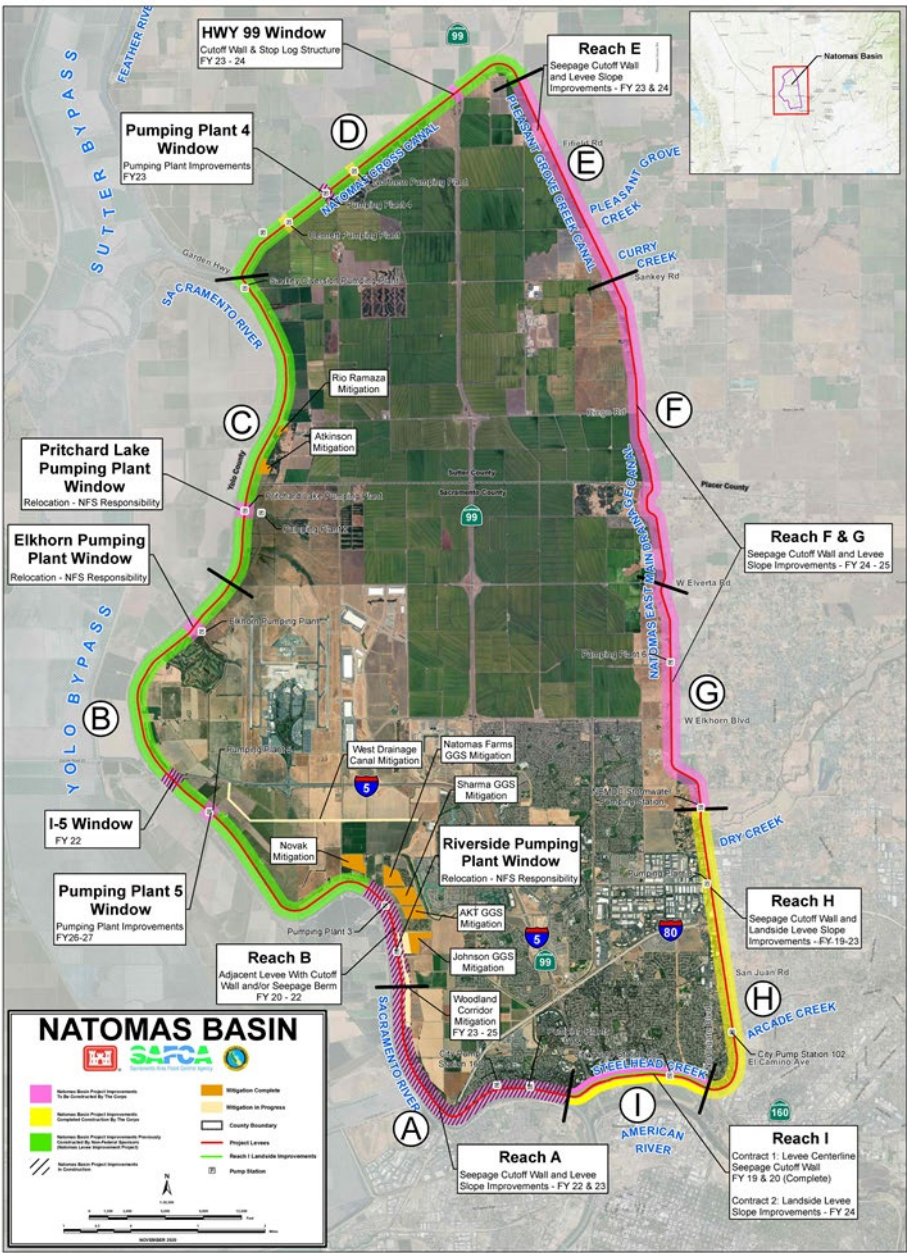


US Army Corps  
of Engineers®



U.S. ARMY

REACH	SCHEDULE
<b>Reach A</b> Gateway Oaks Dr to Farm Rd	<ul style="list-style-type: none"><li>FY23 Construction season underway along Garden HWY starting at Farm Rd. and extending to I-80.</li><li>Additional tree removal resuming Fall 2023.</li><li>Overhead Utility relocations ongoing, estimated completion Spring 2024.</li><li>Improvements to Pumping Plant 1B, City Sump 160 and Pumping Plant 1A anticipated to begin in 2024.</li></ul> <p>Visit <b>Reach A</b> website for the latest project news: <a href="#">Click here</a></p>
<b>Reach B</b> San Juan Rd to Elverta Rd	<ul style="list-style-type: none"><li>Levee construction began July 2020; Adjacent Levee Construction is complete. Final completion, including seepage berm, is expected in the Fall 2023.</li><li>Irrigation canal improvements are complete.</li><li>Lift station is operational and new ARVs are installed. Additional programming and testing will be completed in Summer 2023.</li><li>I-5 Window - Construction began Summer 2022 and was declared substantially complete in January 2023.</li><li>Pumping Plants:<ul style="list-style-type: none"><li>Pumping Plant #3 – Construction completed, and plant is operational.</li><li>Pumping Plant #5 - Construction expected to begin Summer 2024</li><li>Riverside Pumping Plant Replacement ongoing with discharge pipe relocation to begin 2024.</li><li>Elkhorn Pumping Plant construction to begin 2024.</li></ul></li></ul>
<b>Reach C</b> Elverta Rd to Sankey Rd	<ul style="list-style-type: none"><li>Levee construction was completed in 2008/2009 by Sacramento Area Flood Control Agency.</li><li>Pritchard Lake Pumping Plant to begin construction in 2025.</li></ul>
<b>Reach D</b> Sankey Rd to Howsley Rd	<ul style="list-style-type: none"><li>Levee construction was completed in 2008/2009 by Sacramento Area Flood Control Agency.</li><li>Highway 99 Window – Construction expected to begin Spring 2024.</li><li>Pumping Plant #4 – Construction began August 2021; expected to be completed Fall 2023.</li></ul>
<b>Reach E</b> Howsley Rd to Sankey Rd	<ul style="list-style-type: none"><li>Construction activities began June 2023.</li><li>Cutoff wall installation scheduled for Summer 2024.</li><li>Natomas Levee Road is currently closed for construction activities from Sankey Road and extending north to Howsley Road.</li></ul>
<b>Reach F&amp;G</b> Sankey Rd to Drainage Pumping Station	<ul style="list-style-type: none"><li>Levee construction and improvements to the levee slope and Pumping Plant #6 expected to begin Spring 2025.</li></ul>
<b>Reach H</b> Drainage Pumping Station to Northgate Blvd	<ul style="list-style-type: none"><li>Levee construction and improvements to Pumping Stations #8 and #102 began 2018; expected to be completed Spring 2023.</li><li>Seepage berm construction to begin later Summer 2022; completion expected in the Spring 2023.</li><li>Patrol Road &amp; Fencing construction is underway.</li></ul>
<b>Reach I</b> Northgate Blvd to Gateway Oaks	<ul style="list-style-type: none"><li>Contract 1: Levee construction and improvements to Pump Station #58 completed Fall 2022.</li><li>Contract 2: Landside levee improvements and installation of maintenance road expected to begin Summer 2024.<ul style="list-style-type: none"><li>Tree Removal efforts ongoing.</li><li>Utility Relocations expected to begin in Summer 2023.</li></ul></li></ul>



### Get the Latest Natomas Updates Here



Project Website

[www.natomaslevees.com](http://www.natomaslevees.com)

#### CONTACT INFORMATION

For questions or concerns, please contact USACE Public Affairs  
916.557.5100 / [spk-pao@usace.army.mil](mailto:spk-pao@usace.army.mil)



US Army Corps  
of Engineers®





# American River Common Features Natomas Basin

Levee Improvement Project Monthly Update

APRIL 2023



US Army Corps  
of Engineers®



**Reach B:**  
Pumping Plant No. 3 Relief Well Controlled Low Strength Material  
backfill



**Reach H:**  
Levee improvements and Seepage Berm construction



US Army Corps  
of Engineers®

